

# Permanent magnet Servo Motor

## 永磁伺服电机

### 优势 Advantages



体积小重量轻  
Small in size  
Light weight



损耗小效率高  
Low loss  
High efficiency



功率因数高  
High power factor



过载能力强  
High overload  
capacity



高精度  
High precision

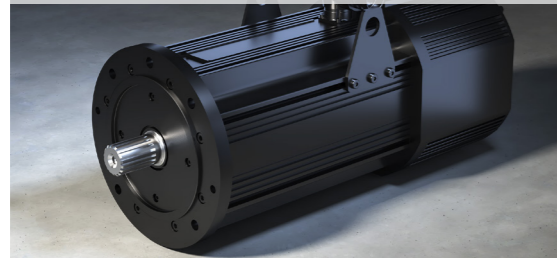


低噪音  
Low noise



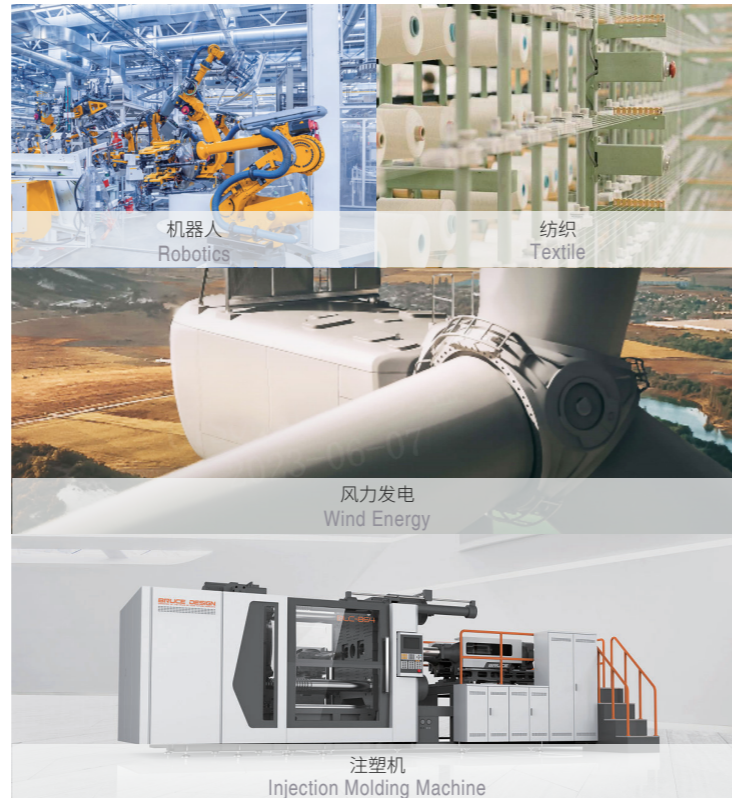
### 应用领域&变频电机

Application Areas&Pitch Motor



不需要换向器和电刷,减少了维护的成本,选择范围宽,控制精度高。具有高防腐等级和特殊的内部涂层,最大程度地保证了风机变桨系统,在各种恶劣环境下安全可靠而且长期的应用。

Not requiring commutators and brushes reduces maintenance costs. Pitch motors offer a wide selection range and high control precision. With a high corrosion resistance rating and special internal coatings, it ensures the wind turbine pitch system's safe, reliable, and long-term operation in various harsh environments.



我司研发生产的高效永磁同步电机,可达到1级能效标准,符合国家最新的电机能效要求。通过淘汰落后低效设备,大力推进电机能效升级。

Our company specializes in the research and production of high-efficiency permanent magnet synchronous motors that reach the highest Level 1 energy efficiency standards, in compliance with the latest national requirements for motor efficiency. By phasing out outdated and inefficient equipment, we have been actively promoting motor efficiency upgrades.

### 电机参数

Motor parameters

系列型号 Series Model	单位 Unit	XDH1-18F	XDH1-25F
转数范围 Speed range	rpm	1000-5000	1000-5000
转矩范围 Torque range	N.m	26-200	40-500
功率范围 Power range	kW	2.7-62.8	4.2-157
效率 Efficiency	%	大于二级能效	大于二级能效
过载倍数 Overload multiplier		2-4倍	2-4倍
电压等级 Voltage level	V	110-660V	110-660V

系列型号 Series Model	单位 Unit	XDH3-18F	XDH3-25F
转数范围 Speed range	rpm	1000-5000	1000-5000
转矩范围 Torque range	N.m	20-180	30-400
功率范围 Power range	kW	2.1-56.5	3.1-125.7
效率 Efficiency	%	大于二级能效	大于二级能效
过载倍数 Overload multiplier		2-4倍	2-4倍
电压等级 Voltage level	V	110-660V	110-660V

系列型号 Series Model	单位 Unit	XDH4-18F	XDH4-25F
转数范围 Speed range	rpm	1000-5000	1000-5000
转矩范围 Torque range	N.m	22-240	50-550
功率范围 Power range	kW	2.3-75	5.2-174
效率 Efficiency	%	大于二级能效	大于二级能效
过载倍数 Overload multiplier		2-4倍	2-4倍
电压等级 Voltage level	V	110-660V	110-660V

系列型号 Series Model	单位 Unit	XDH5-18F	XDH5-25F
转数范围 Speed range	rpm	1000-5000	1000-5000
转矩范围 Torque range	N.m	22-240	50-550
功率范围 Power range	kW	2.3-75	5.2-174
效率 Efficiency	%	大于二级能效	大于二级能效
过载倍数 Overload multiplier		2-4倍	2-4倍
电压等级 Voltage level	V	110-660V	110-660V

系列型号 Series Model	单位 Unit	XDH5-18C	XDH5-25C
转数范围 Speed range	rpm	1000-5000	1000-5000
转矩范围 Torque range	N.m	31-288	70-700
功率范围 Power range	kW	3.2-90	7.3-220
效率 Efficiency	%	大于二级能效	大于二级能效
过载倍数 Overload multiplier		2-4倍	2-4倍
电压等级 Voltage level	V	110-660V	110-660V

系列型号 Series Model	单位 Unit	XDH6-18F	XDH6-25F
转数范围 Speed range	rpm	1000-5000	1000-5000
转矩范围 Torque range	N.m	22-240	50-550
功率范围 Power range	kW	2.3-75	5.2-174
效率 Efficiency	%	大于二级能效	大于二级能效
过载倍数 Overload multiplier		2-4倍	2-4倍
电压等级 Voltage level	V	110-660V	110-660V